



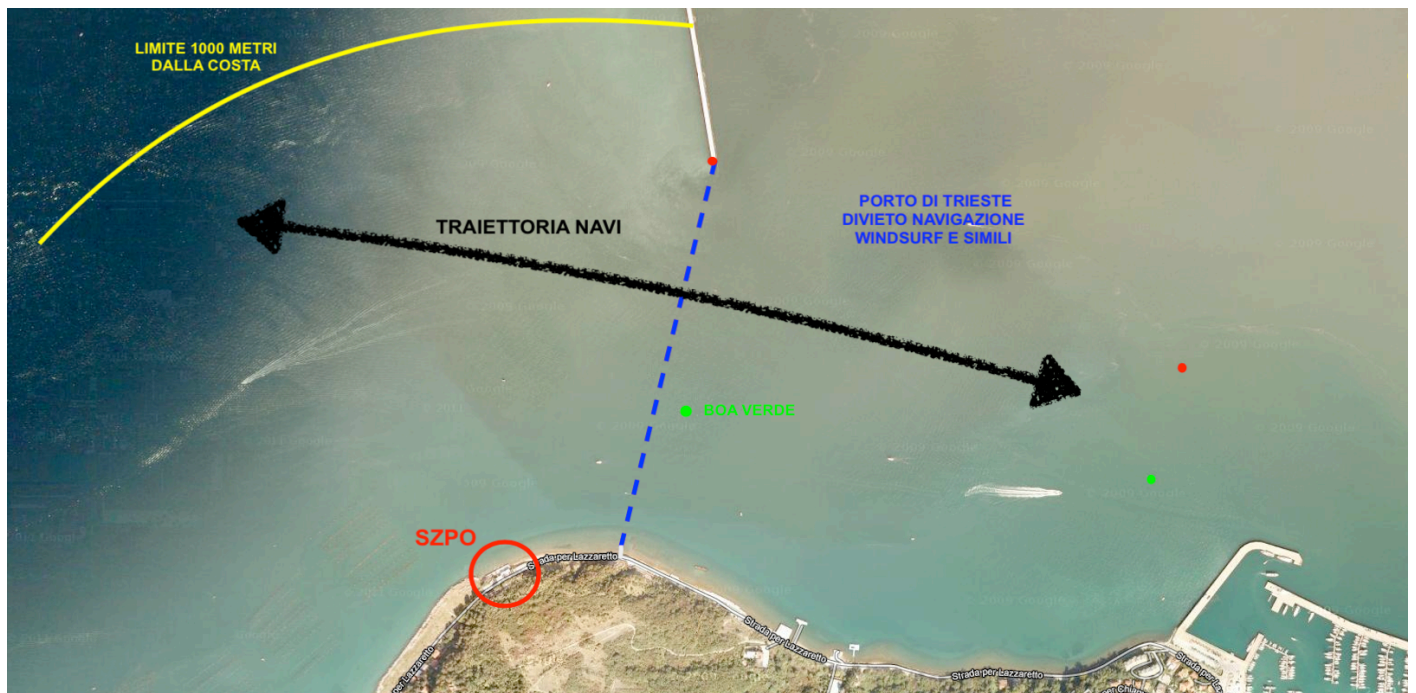
RULES AT SEA

On the coastline where Punta Olmi (GPS: 45.6105,13.73559) is situated, windsurfing and alike water sports (wingfoiling, sailing dinghies, windfoiling etc) must navigate no less than 120 metres and no more than 1000 metres from the shoreline. (to put the distance in perspective, the tip of the Gigi Rizzo breakwater is approximately 800 metres from the shoreline) It is strongly recommended you engage in these activities no more than 500 metres from the shoreline as strong currents and wind could potentially drag you out to sea in an event of equipment failure. A good guideline is to ensure you are always at a safe distance from the shoreline: a distance that you can return by swimming or paddling in the event of an emergency. The distance should always be determined having consideration to one's water ability, the intensity and direction of the wind, general weather and sea conditions (air and water temperature, tides and weather forecasts)

It is most important to note that our Association does not provide a rescue service. We encourage a community spirit at sea where each water enthusiast "looks out" for each other and to always be accompanied by another sailor/surfer whilst in the water. (I.e. never sail alone)

During the bathing season (1 June – 16 September), in the absence of a special designated bathing area marked with buoys, you must navigate at a maximum speed of 3 knots, rowing, swimming, or paddling with the sail lowered for the first 120 metres perpendicular to the shoreline. These designated bathing areas are marked with buoys 70 metres from the shoreline. The navigation of any vessel is permitted from a further 50 metres away (i.e. 120 metres from the shoreline) Should a designated area be marked, this must be utilised following the same rules aforementioned.

It is forbidden to navigate within the Port of Trieste ("Port")– From the tip of Gigi Rizzo breakwater to Punta Rocco (200 metres east of Punta Olmi) and 500 metres from any aquaculture facilities or anchored vessels.



The use of life jackets is compulsory and the minimum age for windsurfing (and alike water sports) is 14 years old if the sail area is greater than 4 square metres and 8 years old if accompanied by an Italian Federal Sailing School Instructor.

Since Punta Olmi is located at the entrance the Port, it is imperative to always keep a close look out for container ships and tankers navigating in this area. At first sight of such vessels approaching, either from the harbour or internally from the Port, you must immediately return to shore and wait until the vessel has clearly passed and is a safe distance away from your navigation area in front of Punta Olmi

Please be aware that windsurfing and alike water sports was only permitted after 2010 thanks to the cooperative efforts of a team of individuals who collaborated with the Port Authority of Trieste to assign a designated area. Consequently, we respectfully ask all members to comply with the rules so that all the hard work achieved to have the spot allocated is not undone.

The penalties for violating the Codes and Regulations of navigation are severe, both civil and criminal against the individual and may have negative repercussions against the Association. In the event a member violates the rules and regulations, ASD SZPO's Management Committee will assess each violation on a case-by-case basis and may implement appropriate disciplinary actions, including expulsion from the Association.